

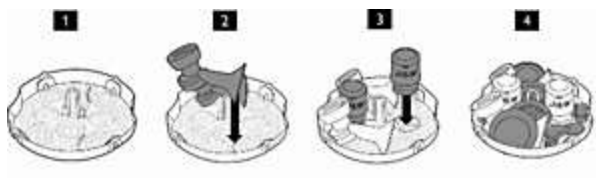
TROUBLESHOOTING

How to load Philips Avent breast pumps and 2 feeding bottles into the Philips Avent microwave sterilizer

To ensure accurate sterilization of your Philips Avent sterilizer, you should follow these instructions.

Instructions

1. Fully disassemble the breast pumps.
2. Make sure steam can circulate around the parts.



What microwave setting to use for my Avent sterilizer?

Find the right temperature and wattage settings for your Philips Avent microwave sterilizer with this simple scheme.

Microwave settings

If your microwave has wattage settings please use the following setting:

Wattage: 1200W-1850W

Sterilizing time: 2 min

Cool-down time: 2 min

Wattage: 850W-1100W

Sterilizing time: 4 min

Cool-down time: 2 min

Wattage: 500W-800W

Sterilizing time: 6 min

Cool-down time: 2 min

How to load the Philips Avent microwave steriliser

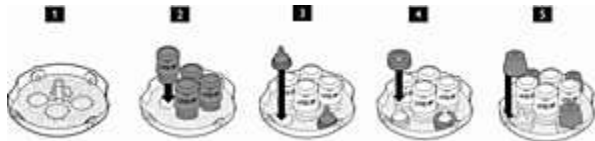
You can quickly and effectively sterilise at home or away with your Philips Avent microwave steriliser. Find out how to best load bottles into your steriliser.

Step 1

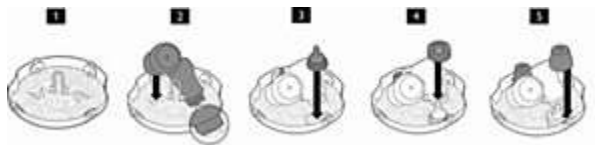
1. Make sure all parts that need to be sterilised are clean and disassembled completely.
2. Do not stack the items too closely together.
3. The steam has to be able to circulate around the items to ensure effective sterilisation.

Note: Larger screw rings only fit if placed in slanted position over the nipples. Place the dome caps in the dome cap holders.

1. Philips Avent feeding bottles



2. Two large Philips Avent feeding bottles (330ml/11oz)



How to clean a Philips Avent microwave sterilizer

Find out how to clean my Philips Avent microwave sterilizer

Step-by-step instruction

- 1) Let the sterilizer cool down before you clean it.
- 2) Never use scouring pads, abrasive cleaning agents or aggressive liquids to clean the sterilizer.
- 3) Clean the lid, the basket and the base in hot water with some liquid soap or in the dishwasher.
- 4) After cleaning, dry all parts properly. **Note:** To prevent scale from building up clean the parts after each use and after cleaning, store the sterilizer in a clean, dry place